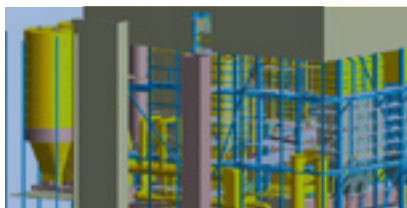
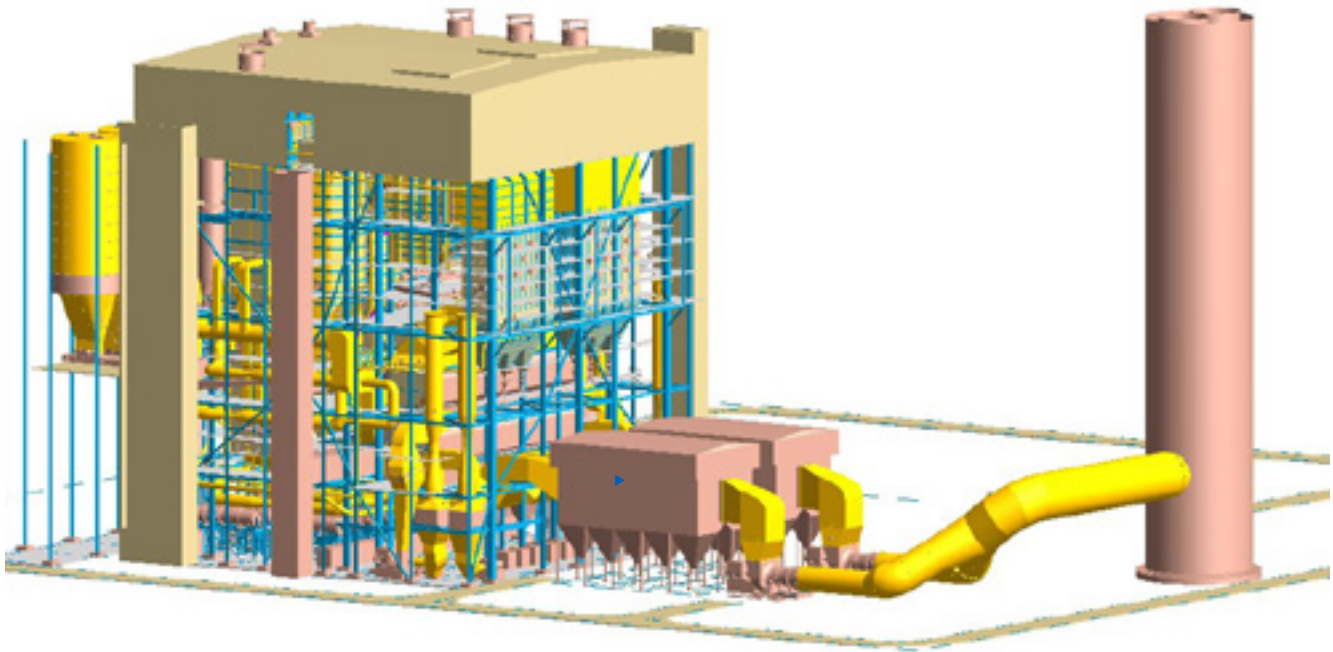


Attarat

World largest oil shale fired power plant



Project summary

Location: Attarat, Jordan
 Customer: Guangdong Power Engineering Corp
 Start-up: 2020
 Scope: Design and supply of CFBs

- ▶ Plant is owned by Attarat Power Company
- ▶ We will design and supply 2x277 MWe CFBs with technical advisory services
- ▶ Each unit produces 842/738 tph of steam at 172/44 bar and 541/541C
- ▶ Designed to fire 100% local oil shale at 920 kcal/kg with 54% ash, 15% moisture and 2.2% sulfur
- ▶ Jordan's first oil shale fired power plant

CFB Plant Power Capacity	2 x 277 MWe
CFB Plant Steam Capacity	2 x 842 tph
CFB Plant Steam Pressure	172 barg
CFB Plant Steam Temperature	541 °C
Fuel	Oil shale

Metsänneidonkuja 10
FI-02130 Espoo, Finland
T +358 (0) 10 393 11

Relanderinkatu 2
FI-78201 Varkaus, Finland
T +358 (0) 10 393 11

ul. Staszica 31
41-200 Sosnowiec, Poland
T +48 (0) 32 368 1300

ul. Młynarska 42
01-171 Warsaw, Poland
T +48 (0) 22 535 50 65

Lindövägen 75
602 28 Norrköping, Sweden
T +46 (0) 11 285 330

Petersstrasse 120
47798 Krefeld, Germany
T +49 151 108 51366

53 Frontage Rd, PO Box 9000
Hampton, NJ 08827 USA
T +1 908 713 2700

Unit 01~07, 5th Floor,
Shanghai Kaisa Financial Centre
1188 Minsheng Rd, Pudong New Area
Shanghai 200135, China
T +86 (0) 21 5820 0123

C-3A-45, IOI Boulevard, Jalan Kenari 5,
Bandar Puchong Jaya, 47100 Puchong,
Selangor, Malaysia
T +603 8075 0887

20th Floor Bhiraj Tower
at EmQuartier, 689 Sukhumvit Rd
Klongton Nuea, Wattana
Bangkok 10110 Thailand
T +66 (0) 2 0417140 3

Suite 706-708, 7th Floor, Central Bldg
31 Hai Ba Trung St
Hanoi, Vietnam
T +84 (0) 4 39393809

7th floor, 621, Yeong-dong-daero,
Gangnam-gu, Seoul, Korea 06087
T +82 2 3446 8325

Room 901A, 9th Floor
Vicente Madrigal Bldg, Ayala Ave
Makati City 6793, Philippines

WISMA GKBI #1606, Jl. Jend. Sudirman No.28,
Jakarta 10210 Indonesia
T +62 (21) 5795 1095

ThinkPark Tower, 1-1 Osaki 2-chome
Shinagawa-ku, Tokyo 141-6025, Japan
T +81 (0) 3 6737 2000

www.shi-fw.com

Our vision is to provide sustainable energy solutions through decarbonization, decentralization and digitalization of the energy industry. Our capabilities cover customer needs in the fields of power generation utilizing circulating fluidized bed (CFB) technologies, long term energy storage, and related network services. We continuously broaden our portfolio of products and services by advancing our in-house technologies and developing further alliances with new partners.

Our Values

Respect for people.

Valuing and inviting differing views and ideas

Committed to customers.

Exceeding expectations and providing value

Safety, integrity and teamwork.

Incorporating ethics in everything we do

Ownership of results.

Personally ensuring that success is achieved

Passion to innovate and grow.

Setting challenging goals for growth



Sumitomo
SHI **FW**