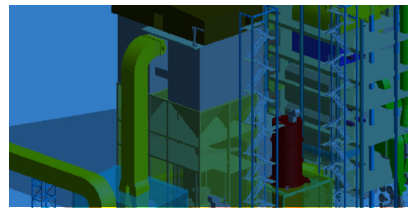
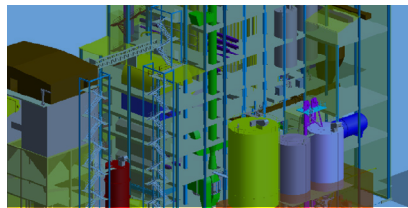
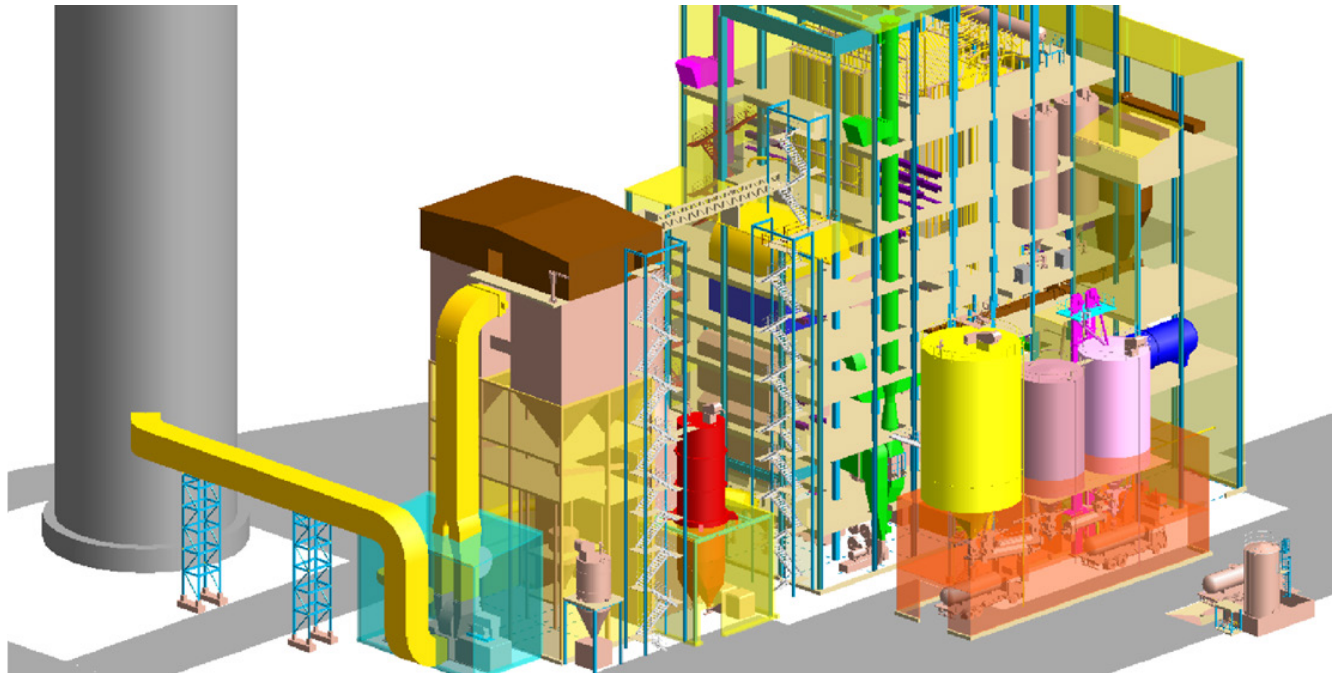


Fortum Silesia CHP Plant

Multi fuel-fired CFB and CFB scrubber



Project summary

Location: Zabrze, Poland
 Customer: Fortum Heat Polska
 Duration: 2015-2018
 Scope: CFB boiler and scrubber

The Fortum Silesia CHP Plant will produce 75 MWe of power from waste RDF, biomass and bituminous coal. The plant will utilize Sumitomo SHI FW's circulating fluidized-bed and CFB scrubber technology to cleanly and efficiently produce power.

- Scope included design and supply of the CFB boiler and Jet VIP CFB scrubber

Plant Electrical Output (Net)	75 MWe	
Steam Flow	270 tph	595 kpph
Steam Pressure	92 barg	1334 psig
Steam Temperature	536°C	997°F
Fuel	Waste RDF, biomass, bituminous coal	
CFB scrubber flue gas flow	298,032 ACFM	506,360 m3/hr

Metsänneidonkuja 8
FI-02130 Espoo, Finland
T +358 (0) 10 393 11

Relanderinkatu 2
FI-78201 Varkaus, Finland
T +358 (0) 10 393 11

ul. Staszica 31
41-200 Sosnowiec, Poland
T +48 (0) 32 368 1300

ul. Chmielna 85/87
00-805 Warsaw, Poland
T +48 (0) 22 581 00 36

Lindövägen 75
602 28 Norrköping, Sweden
T +46 (0) 11 285 330

Petersstrasse 120
47798 Krefeld, Germany
T +49 151 108 51366

53 Frontage Rd, PO Box 9000
Hampton, NJ 08827 USA
T +1 908 713 2700

8th Floor, UC Tower
500 Fushan Rd
Pudong New Area
Shanghai 200122 China
T +86 (0) 21 5058 2266

20th Floor Bhiraj Tower
at EmQuartier, 689 Sukhumvit Rd
Klongton Nuea, Wattana
Bangkok 10110 Thailand
T +66 (0) 2 0417140 3

Suite 706-708, 7th Floor, Central Bldg
31 Hai Ba Trung St
Hanoi, Vietnam
T +84 (0) 4 39393809

7th floor, 621, Yeong-dong-daero,
Gangnam-gu, Seoul, Korea 06087
T +82 2 3446 8325

Room 901A, 9th Floor
Vicente Madrigal Bldg, Ayala Ave
Makati City 6793, Philippines

WISMA GKBI #1606, Jl. Jend. Sudirman No.28,
Jakarta 10210 Indonesia
T +62 (21) 5795 1095

ThinkPark Tower, 1-1 Osaki 2-chome
Shinagawa-ku, Tokyo 141-6025, Japan
T +81 (0) 3 6737 2000

We are the premier global supplier of innovative circulating fluidized bed (CFB) technologies, providing sustainable value to our customers through our relentless drive for environmentally sound and reliable power solutions while we grow.